

WORKFLOW BUSINESS PROCESS MANAGEMENT



Business Process Manager – (BPM)

Greentree's BPM is one of the key weapons to truly drive exceptional business performance and increased business returns in a mid-sized organisation. Historically many new technologies have failed to deliver significant benefits to mid-sized companies as they have often been expensive to purchase and maintain, inflexible and difficult to implement, resulting in a questionable ROI.

Historically BPM has also been seen as the preserve of large companies and the domain of high-cost business consultants who were adept at putting business into a strait-jacket. Greentree BPM changes this with an extremely powerful, low-cost, easy to install BPM system which will both eliminate business pain and provide a massive business boost.

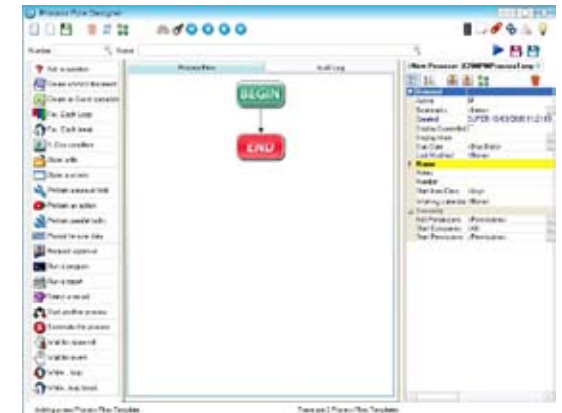
them. Deliver consistent, controlled results, no matter who is involved in the process, with the easy ability to improve and refine those processes. Consistency and control are obtained by firstly having a process defined, the appropriate people pulled in to any step in the process, all parties (internal or external) being communicated with effectively and total transparency of progress and/or bottlenecks.

Key Benefits

- Consistent delivery across the business
- Collaboration across departments
- Proactive stakeholder communication
- A focus on critical business
- Elimination of damaging human error
- Easy management of variations
- Rapid response to market changes
- Slick processes increasing productivity
- Fraud prevention
- Total visibility at every step

Consistent Processes – Consistent Delivery

By nature, human beings are characteristically unique, forgetful, inconsistent and relatively poor communicators. As the volume and complexity of processes and tasks increase and constantly change, there is a struggle to keep up. When breakdowns occur, with missed tasks and communications, there is a significant impact on delivery to customers, cost management and bottom-line profit. Greentree BPM provides the opportunity to not only document your processes but the ability to fully automate



“Very, very flexible!”



“The ability to customise an active desktop and basically, allow users to control their own workflows was a real stand-out for me – this had the effect of changing and improving the way information flows right around the business.”

Bruce Rayment, CEO - Alucobond Architectural

Inconsistency – Managing the Variations

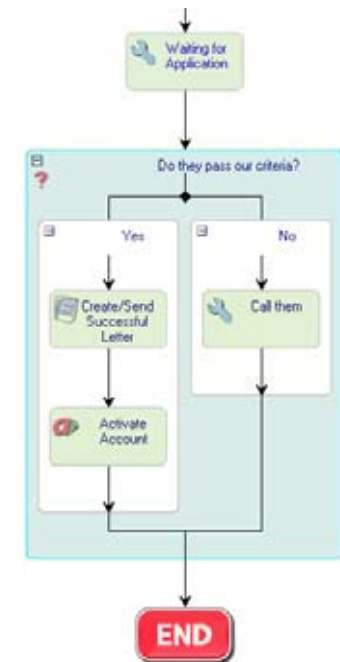
Consistency and control are seen as the key benefits of BPM but its greatest hidden benefit is in managing inconsistent and highly targeted variations. Not all customers are equal, not every inventory item need follow the same supply processes, some machines (or

people) need different monitoring... and its BPM capacity to handle all these variations that provides a massive business boost.

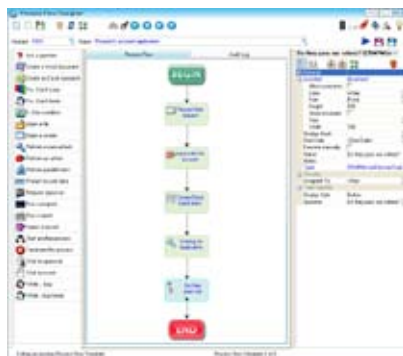
A good example of this is a company with hundreds of product and thousands of customers but with one range of products to one customer providing a significant percentage of the companies' profitability. To miss deliveries, be out-of-stock, or mess up this critical piece of business would have the customer quickly sourcing from other suppliers.

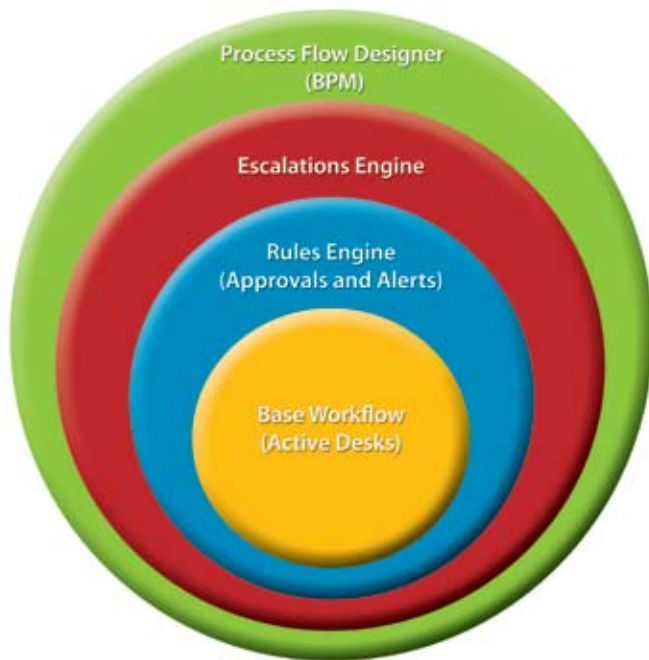
For this one piece of business you can easily build many specific BPM processes, management alerts and escalations – even to the CEO's cell-phone. Every order in this category can be tracked, reorder processes can be unique, and automatic status communication to the customer built in at every stage.

At minimal cost you can achieve bullet-proof processes for critical aspects of your business.



“Very, very integrated!”





BPM is not about creating a strait-jacket and burying the organisation in meaningless approvals and bureaucracy. It's about really targeting the critical tasks and making sure every person does them every time.

Flexibility – the mid-sized companies' competitive advantage

Successful mid-sized organizations have developed a competitive advantage through being fast, flexible and quick to adapt. They meet the challenge of today's ultra-competitive environment by seizing new opportunities quickly, having very close ties with customers and markets, and internally having talented, multi-tasking people.

However, it is exactly these conditions that can create ragged delivery, missed communications and inefficient use of precious resources.

With Greentree BPM process changes can be just as fast-moving, ensuring key systems and processes are truly supporting the dynamic business

Fraud prevention and detection

Unfortunately, fraud and theft are too prevalent in business and BPM can address these business risks with many easy additional controls. From discount monitoring, tracking and notifying any changes to supplier bank account details or similar potentially suspicious activity, BPM has a strong audit role to play.

The complete Workflow Suite

Greentree BPM consists of four technology layers:

1. **Workflow Desktops** – This is the core of BPM which enables each user's desktop to be customised by function, role or individual preference. Within this is Active Desks which is constantly monitoring events, refreshing screens and automatically pushing the latest status and information to the user's desktop and prompts for action.

[Click here to view Greentree Workflow Desktop brochure](#)



"Very, very alive!"



2. **Approvals and Alerts (Rules Engine)** – This is where users define all the rules and conditions that should apply to specific business processes along with the underlying engine using those rules to monitor all the system activity.

[Click here to view Greentree Approvals & Alerts brochure](#)

3. **Escalation Engine** – This is monitoring-by-exception where the system looks for actions that have not been completed on-schedule or as they should have. It then decides what action to take next.

4. **Process Flow Designer** – This is where you can graphically define, design and build simple and complex processes and by-default document and record those processes.

Unlike other BPM offerings, Greentree BPM does not rely on third party systems. There is no need to build complex, expensive to build and difficult to maintain interfaces to ensure the underlying IT systems understand data and business processes. Because the Greentree system is totally integrated it knows and understands all the data

and business transactions being undertaken, so it can intelligently see what has or hasn't been done and what stage processes are at.

Using Greentree BPM to increase your productivity

Highly automated to eliminate unnecessary administration

Increasingly companies are looking to simplify process management by automating decision making procedures and eliminating unnecessary staff involvement. BPM uses organisation defined business rules and corporate policies to automatically direct and administer data and tasks.

User-friendly graphical environment

Greentree BPM makes it easy for your organisation to communicate and prioritise processes for staff by allowing you to draw process or decision rules as a flow diagram using 'click and point' functionality. When a process is activated it guides staff through the procedures in a user-friendly graphical environment.

“Greentree has delivered drastic improvements right across the board from providing mechanics with their precise work related information to reducing time-consuming manual tasks and providing structure around our manufacturing and business processes.”

Darryl Martyn, Managing Director - Hydrosteer





Improve process operational efficiencies for competitive advantage

In a competitive environment, businesses need to ensure operational effectiveness is maximised. BPM can improve the ability of your organisation to execute and prioritise work across the business, ensuring you stay flexible and proactive and gain critical competitive advantage.

Maintain best practice in your organisation

BPM allows companies to define company processes including people, data, rules and events for a transparent approach to business practice. BPM gives organisations a platform to understand process issues and provides the tools to resolve problems and deploy changes quickly, ensuring your company is delivering best practice.

Complete control of process management every step of the way

BPM gives management an accurate, big picture view of company processes and allows approved personnel to view and validate every part of a task or process in real-time. Knowing where your organisation is every step of the way can improve the way you do business and enhance the service you provide to customers.

Integration with other Greentree Modules

Greentree’s modular system builds upon and integrates with all other modules to ensure every drop of business intelligence is extracted from every transaction right across the business – nothing goes to waste. Greentree BPM is an advanced Workflow tool providing BPM functionality integrated with every part of Greentree to optimise business process management in a ‘live’ environment.

KEY FEATURES

Define Business Rules

Greentree BPM enables business analysts and developers to quickly and simply define business rules and corporate policies graphically. Rules are defined within the module and can be linked and managed centrally.

Integrated to MS Office

Processes can include automatically generated letters using Word or embed spreadsheets right into the heart of a process. Emails can be generated as part of a process as can SMS messages.



“Very, very powerful!”



Multi-Streaming

Not all processes run sequentially in an organisation and Greentree allows you to define parallel tasks to be completed in tandem.

Embedded Approvals

Any process can contain one or more approval points and the process can be suspended pending approval or can proceed up to a defined checkpoint where approval becomes mandatory.

Integrated with other programs

Greentree is all encompassing, allowing not only its own functions to be incorporated into a process but any external program can be called from within a running process as well.

Escalations

A critical aspect of any process is ensuring tasks get done on a timely basis and Greentree's Escalation Engine can monitor and escalate tasks when necessary to ensure smooth and efficient operations.

Prioritise Processes

Users can execute and prioritise work across all business processes. Tasks can be prioritised by dates and projected completion.

Security

Process Manager utilises the highly versatile security structure found in all Greentree Modules. Security administrators can utilise generalised team-based rules to specify a department's, team or individual's ability to perform or maintain a task.



CLIENT SPOTLIGHT: ALUCOBOND ARCHITECTURAL

Alucobond Architectural is a subsidiary of Halifax Vogel Group (HVG) and is a privately owned Australian company that imports and distributes graphics media, industrial fabrics, decorative building products and exhibition systems throughout Australasia.

For more information visit:
www.alucobond.com.au



“Very, very integrated!”

Greentree is modular, with all business functions totally **integrated**. This provides you with a wide variety of modules and sub-modules that afford options rarely found in other packages. You purchase the pieces that you need, effectively matching the system to fit your business. Choose from: Financials, Job Costing, Supply Chain & Distribution, Manufacturing, Human Resources, Customer Relationship Management (CRM), Service & Asset Management, Business Intelligence, Retail, Workflow-Business Process Management and eBusiness.

Greentree is a solution, readily adapting across a broad range of industries and business types. Businesses are provided with a **powerful**, extremely cost-effective system that has consistently proven itself capable of managing change and growing business potential.

With simple, smart thinking at your fingertips, Greentree provides the ultimate seamless business-building environment. Exploit its accuracy in business metrics, challenge its capability to deliver empowering information. Rely on the one highly **responsive** solution to efficiently streamline your internal processes resulting in increased manageability and productivity across all areas of your enterprise.

What’s the difference to any other software solution? Greentree is the most responsive business software product available, providing a source of competitive advantage to help you drive your business to the next level!

